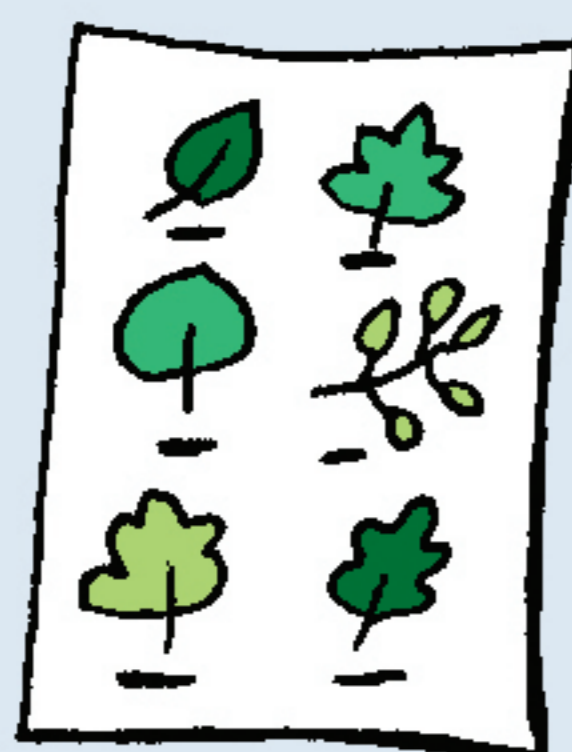


# My street tree

Have you ever stopped to have a good look at your nearest garden or street trees? What sort are they? How old? Are they important for wildlife? Do birds roost or nest in them?

## You will need:

- Sheet of blank paper and clipboard
- Extra paper and crayons
- Magnifying glass or bug pot
- Minibeast ID chart or book
- Tape measure (optional)
- Leaf spotting sheet or other tree ID chart



- 1 Draw your tree in the middle of your paper. Use a leaf spotting sheet to help identify it.

- 2 Stick a fallen leaf on the paper, or do a rubbing using paper and crayons.

- 3 Use a magnifying glass, pot or pooter to check out the minibeasts living on your tree.

- 4 How thick is its trunk? Can you measure it at chest height with a tape measure? Can you hug it?

- 5 Does your tree have plenty of healthy leaves and soil around its trunk?

- 6 What other wildlife is living in the tree? Put all your findings on your tree drawing.

